

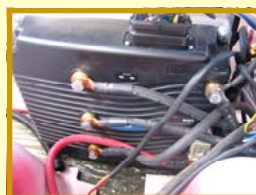


Electric Vehicles

Proudly Introducing *The Star AC-48*



- 18HP, 81 ft-lb torque
- 6000RPM AC motor
- 400A Curtis AC controller
- Built-in thermal couple in the motor
- Digital speedometer and battery indicator
- No more brushes or commutators
- Higher efficiency, longer mileage
- Ideal for applications in hilly areas
- Ideal for 4 and 6 passenger vehicles
- Ideal for LSV (NEV) applications



Benefits of Star AC-48:

- No maintenance needed for AC motors
- Higher efficiency, longer mileage
- Much faster speed climbing hills
- Much more torque to carry the load
- Built-in thermal couple in motor, controller shuts down if motor overheat, no more burned up motors
- Built-in quadrature encoder, controller knows the motor speed and direction exactly
- Digital indicator with battery and speed information
- Factory installed and tested, same two year warranty as the vehicle

